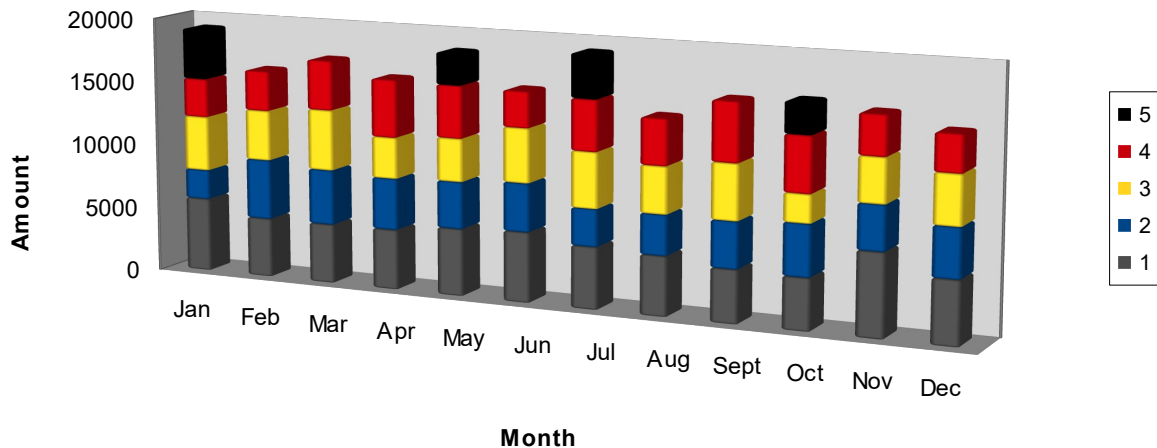


2016 Financial Secretary Report

<u>Fund</u>	<u>Amount</u>	<u># Donors</u>	<u>Anonymous</u>	<u>Grand Total</u>
General Fund Offerings	\$192,747.73	98 (note 2)	\$9,448.00	\$202,195.73
Offset (note 1)	\$17,238.83	N/A	\$968.48	\$18,207.31
Capital Expense	\$1,065.00	5	\$0.00	\$1,065.00
Deacon Fund	\$3,365.00	10	\$30.00	\$3,395.00
Specials				
Youth Mission	\$90.00	3	\$446.00	\$536.00
Easter	\$680.00	20	\$20.00	\$700.00
Evan Kennedy Mission	\$310.00	6	\$680.00	\$990.00
Memorial Fund	\$17,692.00	25	\$0.00	\$17,692.00
Missionary Christmas	\$700.00	16	\$1,000.00	\$1,700.00
Missionary Cook	\$180.00	7	\$62.00	\$242.00
Missionary J&B Valentin	\$84.00	3	\$200.50	\$284.50
Missionary Overholt	\$137.00	5	\$130.00	\$267.00
Pastor Christmas	\$937.00	15	\$0.00	\$937.00
Thanksgiving	\$2,897.00	15	\$420.00	\$3,317.00
Bethany Scholarship	\$10.00	1	\$150.00	\$160.00
Christian Education	\$250.00	4	\$275.00	\$525.00
Missionary Petite	\$125.00	4	\$235.00	\$360.00

Total Giving Income **\$238,508.56** **\$14,064.98** **\$252,573.54**

Giving by Month/Week (Note3)



- Notes:** 1) Offset account is money received for reimbursement of expenses outside of budget and special events
These include but not limited to study guides, group tickets, other items.
2) Actual number of donors is unknown as money was received through offering plate collection process.
3) Giving stated in chart does not include specials.

Special thanks to **Bob Galmish, Jim Henneman, Rob Hess, Wally Staab and Ron Gromacki** for helping count the weekly offerings.